

## Connecting PowerBI with Zeno.PM

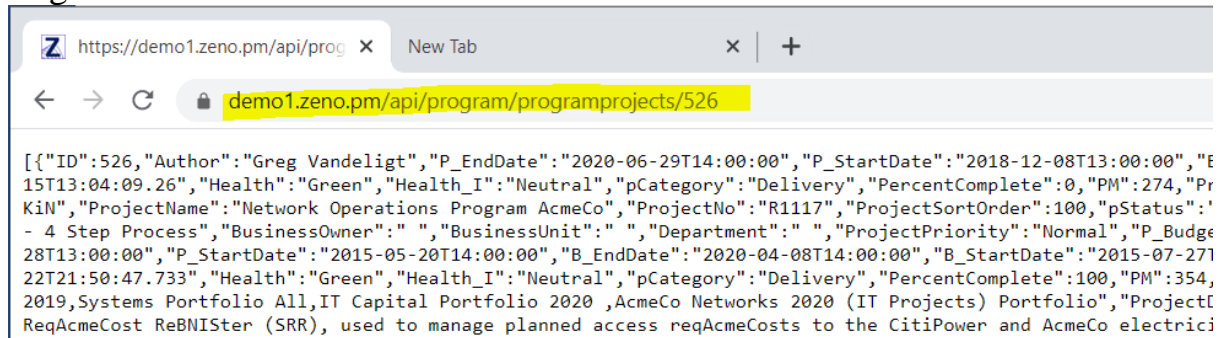
Connecting with PowerBI is done through API's. This instruction document will run through a setting up a typical API connection.

### Test API in Zeno

For our first connection we will use the API to return a list of Projects in a Program

Eg <https://{sitename}.zeno.pm/api/program/programprojects/{programId}>  
Need to adjust sitename to your site, and get the programId

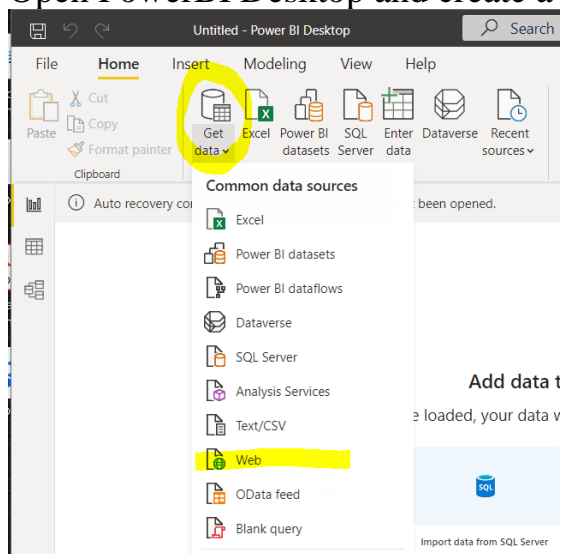
Log into Zeno.PM then enter the API url above to test it works.



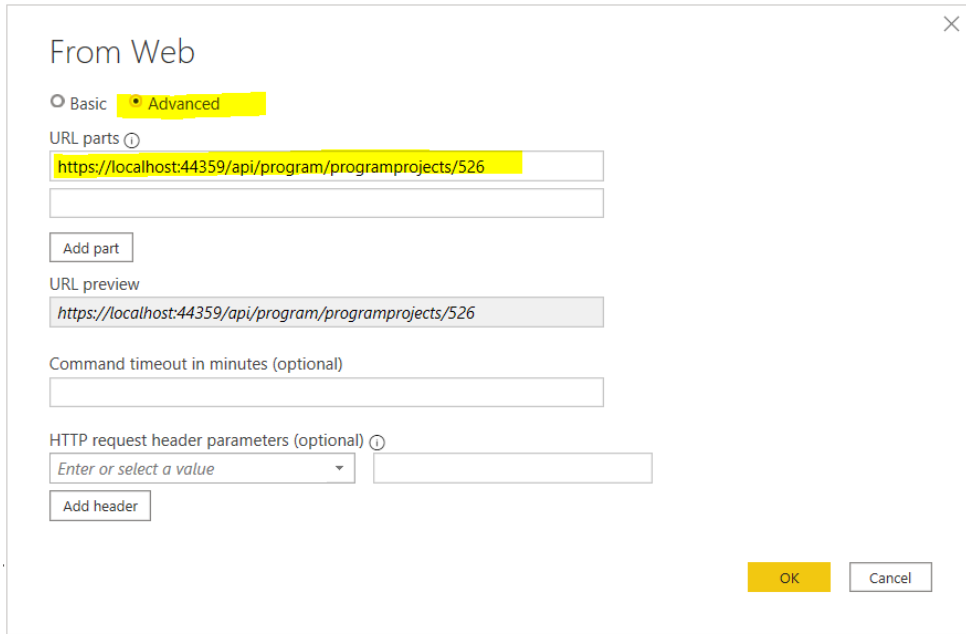
### PowerBI Configuration

(An assumption is made that the reader of this instruction has some familiarity with PowerBI)

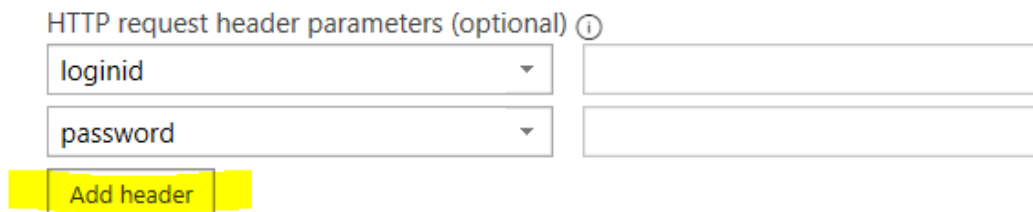
- 1) Open PowerBI Desktop and create a new connection (Get data -> Web)



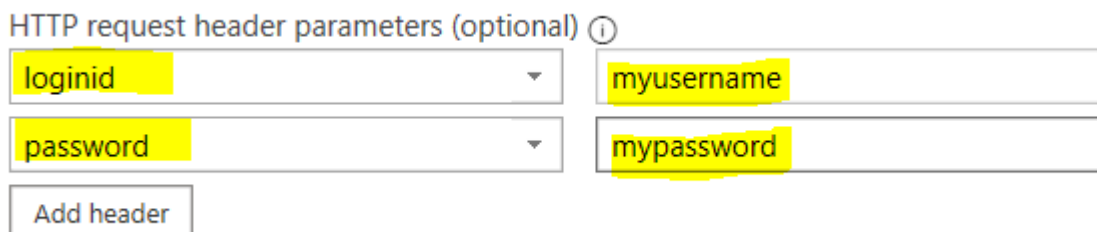
2) Select 'Advanced' and then paste in the URL eg our test url.



3) Now we need to add the authentication parameters we will use for a secure connection. We do this by using the Add headers button



4) Add the two Headers of [loginid] and [password]. In the value area add your username and password for accessing Zeno.PM



5) Select OK, you will now have a connection to your first Zeno.PM API in PowerBI

